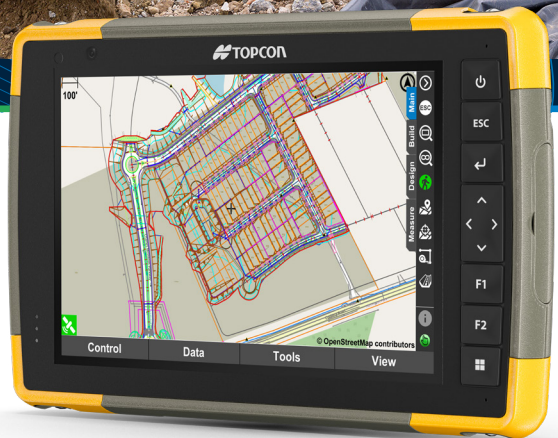


Topcon Pocket 3D

Maximum efficiency for all your construction work



Ultimate field software
Intuitive All-in-One solution

Measure - Design - Stake - Calculate - Report

Learn more at topconpositioning.com

 **TOPCON**

For Work That Matters™

Pocket 3D is the Construction Booster in your pocket

From basic setup to advanced layout, Pocket 3D excels in all construction-related activities

As an integral part of the MC software portfolio, Pocket 3D is the ultimate tool for all surveying work in the hand of foremen, grade checkers, surveyors, and operators. The intuitive user interface and wizards guide users through performing various in-field designs, complex stakeouts, real-time cut/fill, and a wide range of calculations, including volume measurements.

Pocket 3D is an essential part of MC-Mobile

MC-Mobile combines key technologies from surveying and machine control to increase efficiency while reducing wait times and manpower. Pocket 3D empowers users with everything they need to complete one-man contracting jobs. Simply exchange the hardware between the machine and the range pole.

» Works with all Topcon GNSS systems, robotic and manual total stations, LN-series and mmGPS

» Available for Windows, Android and iOS

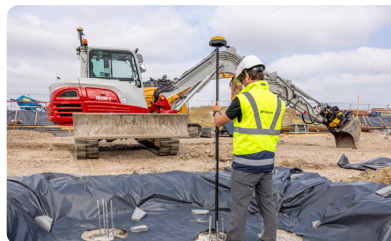
» Same user interface and data structure as the 3D-MC machine control software enables simple interoperability

» Full interaction with Sitelink3D, the Topcon web service for data management on construction sites. Share your data between the office, machines and field controllers with just one click

» Sitelink3D requires service points on your Topcon account



Benefit from a variety of display options and configure them according to your needs—ensuring nothing is left to be desired.



Don't waste time or money. Pocket 3D covers all your construction needs with expertise and precision.



From the initial excavation pits to intricate road designs and precise in-field volume calculations, Pocket 3D's on-site design enable seamless operation.



Scan to download
the Pocket 3D app.



Specifications subject to change without notice.
© 2024 Topcon Corporation. All rights reserved. 7010-0674 J 11/24

Learn more at topconpositioning.com



For Work That Matters™